

# GREAT-ER

## Installation Manual

The contents of this document are the intellectual property of TechniData AG. Any forwarding to third parties or publication even of parts thereof require express and written approval by TechniData AG.

Documentation\_Installation.doc  
Version 1.4  
08.10.2003

## 0 Information on the Document

### 0.1 Project Survey

Document-Title	GREAT-ER
Document Subtitle	Installation Manual
Project	GREAT-ER, Version 2.0
Customer	CEFIC, Brussels
Owner	TechniData AG Dornierstraße 3 88677 Markdorf, Germany
Department	Environmentals
Author	Sandra Boos
Filename	\\Cm02\UIT\UIT-EHS-Projekte\Kunden\CEFIC, Brüssel\GREAT-ER\08-Doku\GREAT-ER Version 2\Documentation_Installation.doc
Version	1.4
Date	08.10.2003
Status	released

### 0.2 Version Management

Version Number	Person Responsible Date	Chapter	Description
1.0	SBO, 06.06.2003	All	Create Documentation
1.1	SNE, 10.07.2003	All	Proof-reading
1.2	JR, 05.09.2003	2	New created
1.3	SF, 07.10.2003	Heading	Removed version II from GREAT-ER in headings, headlines and footing lines
1.4	JR, 08.10.2003	3.2	Add "drop user"

### 0.3 Document Cross References

Reference	Title	Document-ID	Version	Date
1				

## 0.4 Table of Contents

<b>0</b>	<b>INFORMATION ON THE DOCUMENT .....</b>	<b>2</b>
<b>0.1</b>	<b>Project Survey.....</b>	<b>2</b>
<b>0.2</b>	<b>Version Management.....</b>	<b>2</b>
<b>0.3</b>	<b>Document Cross References .....</b>	<b>2</b>
<b>0.4</b>	<b>Table of Contents.....</b>	<b>3</b>
<b>1</b>	<b>INTRODUCTION.....</b>	<b>4</b>
<b>2</b>	<b>REQUIREMENTS.....</b>	<b>4</b>
<b>2.1</b>	<b>GREAT-ER Single User Version.....</b>	<b>4</b>
<b>2.2</b>	<b>GREAT-ER Network Version – Client.....</b>	<b>4</b>
<b>2.3</b>	<b>GREAT-ER Network Version – Server.....</b>	<b>4</b>
<b>3</b>	<b>INSTALLATION.....</b>	<b>5</b>
<b>3.1</b>	<b>Installation with Setup Program.....</b>	<b>5</b>
<b>3.1.1</b>	<b>Single User Version.....</b>	<b>6</b>
<b>3.1.2</b>	<b>Network Version – Client .....</b>	<b>11</b>
<b>3.1.3</b>	<b>Network Version – Server.....</b>	<b>15</b>
<b>3.2</b>	<b>Manual Installation.....</b>	<b>18</b>
<b>3.2.1</b>	<b>Create Tablespace and User .....</b>	<b>18</b>
<b>3.2.2</b>	<b>Create Database Objects – Part 1 .....</b>	<b>19</b>
<b>3.2.3</b>	<b>Import Data .....</b>	<b>20</b>
<b>3.2.4</b>	<b>Create Database Objects – Part 2.....</b>	<b>20</b>

# 1 Introduction

**GREAT-ER** is a GIS assisted model for environmental risk assessment and management of chemicals in river basins.

Multiple simulation models are available: emission, sewer, waste water treatment and river. The simulation output forms a basis on which risk assessments can be performed. In the long run **GREAT-ER** could help improve the water quality of our rivers.

## 2 Requirements

Depending on your installation scenario there are different requirements.

### 2.1 GREAT-ER Single User Version

- Hardware: Intel Pentium 1 GHz or better  
256 MB RAM or more  
1 GB free disk space or more  
CD ROM
- Software: MS Windows NT 4.0, 98, ME, 2000 or XP  
No ORACLE software installed  
Adobe Acrobat Reader, Version 5 or higher  
Administrator privileges during the installation

### 2.2 GREAT-ER Network Version – Client

- Hardware: Intel Pentium 500 MHz or better  
128 MB RAM or more  
300 MB free disk space  
CD ROM
- Software: MS Windows NT 4.0, 98, ME, 2000 or XP  
ORACLE client software version 8.1.7 installed and configured  
Adobe Acrobat Reader, Version 5 or higher

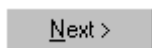
### 2.3 GREAT-ER Network Version – Server

- Hardware: Any hardware running ORACLE database (see ORACLE requirements)
- Software: ORACLE database Standard or Enterprise Edition version 8.1  
ORACLE Net Listener installed and configured

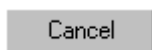
## 3 Installation

### 3.1 Installation with Setup Program

The setup program is mainly used for the installation of the single user version. Installing **GREAT-ER 2.0** with the setup program is quite easy. No previous ORACLE knowledge is necessary in order to install the **GREAT-ER** single user version. Just start the installation kit setup.exe with a double click on it. The following welcome screen then appears:



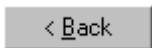
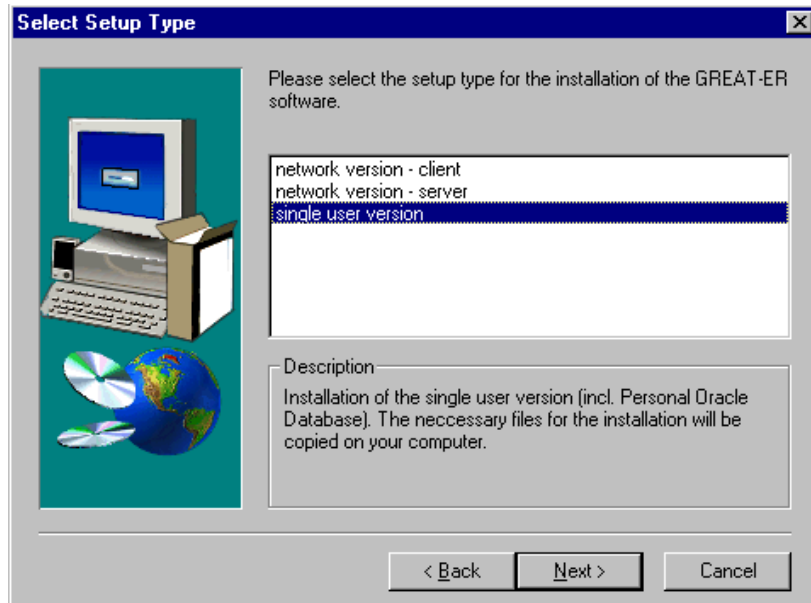
Continue the installation process and navigate to the next step.



Exit the setup program.

The **GREAT-ER** software is available as a single user version or a network version. This setup program supports the installation of both versions.

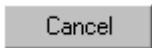
Select the appropriate version from the screen below.



Navigate one step back in the installation process.



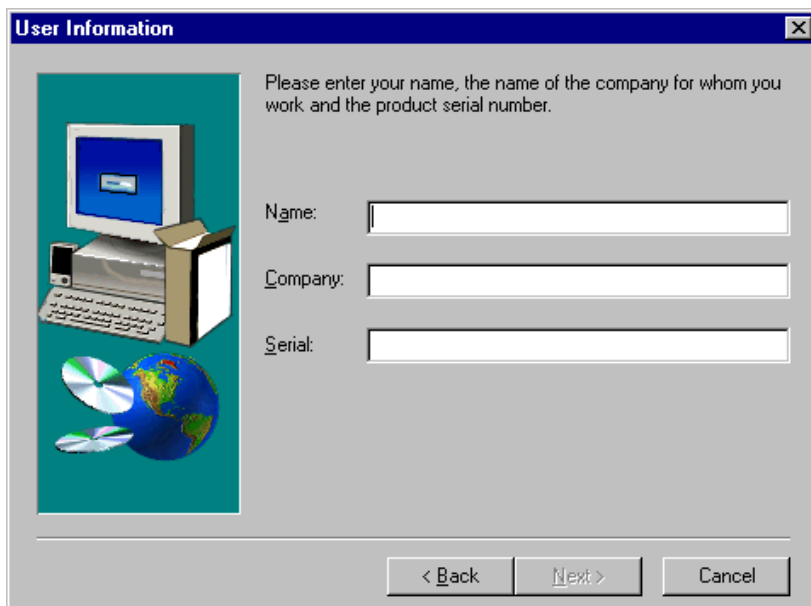
Continue the installation process and navigate to the next step.

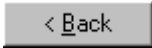
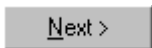
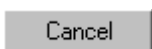


Exit the setup program.

### 3.1.1 Single User Version

During the installation of the single user version the Personal ORACLE database and the **GREAT-ER** software will be copied onto your computer. You need a valid serial number for this type of installation. This is necessary, because you need a license for the use of the Personal ORACLE database. You will receive a valid serial number if you have a license for the ORACLE database.

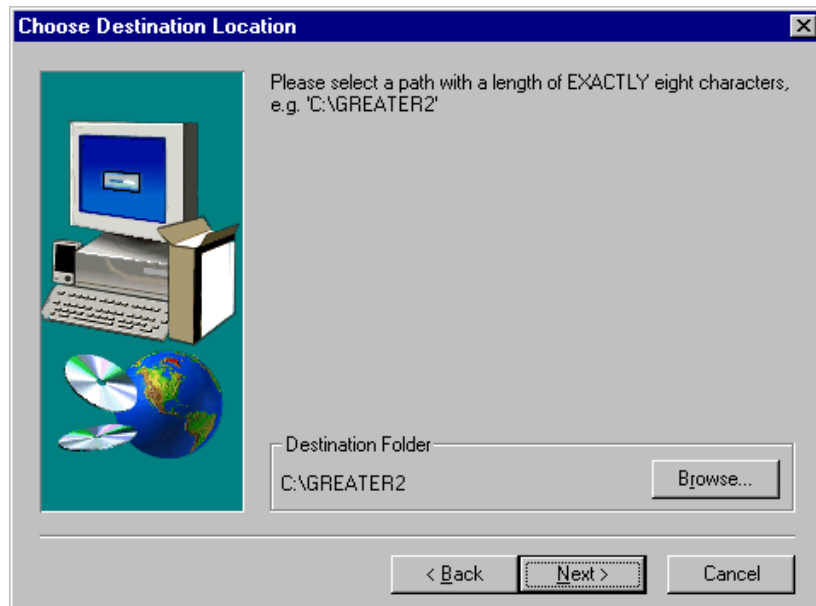


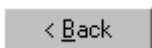
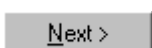
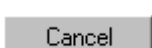
	Navigate one step back in the installation process.
	Continue the installation process and navigate to the next step.
	Exit the setup program.

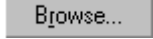
The setup program now determines the appropriate directory for the installation. Please check whether the directory suggested (e.g. C:\GREATER2) is convenient for the **GREAT-ER** software installation. If you install the single user version, the path should be a first level path and must have exactly eight characters.

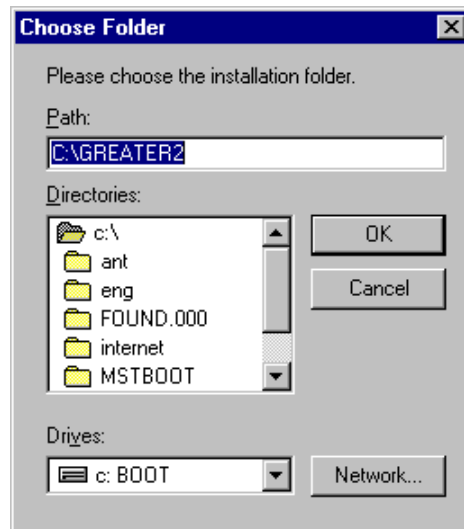
Example:


- C:\GREAT-ER2 → The path has more than eight characters.  
 C:\PROGRAM\GREATER2 → The path is not a first level path.

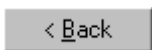
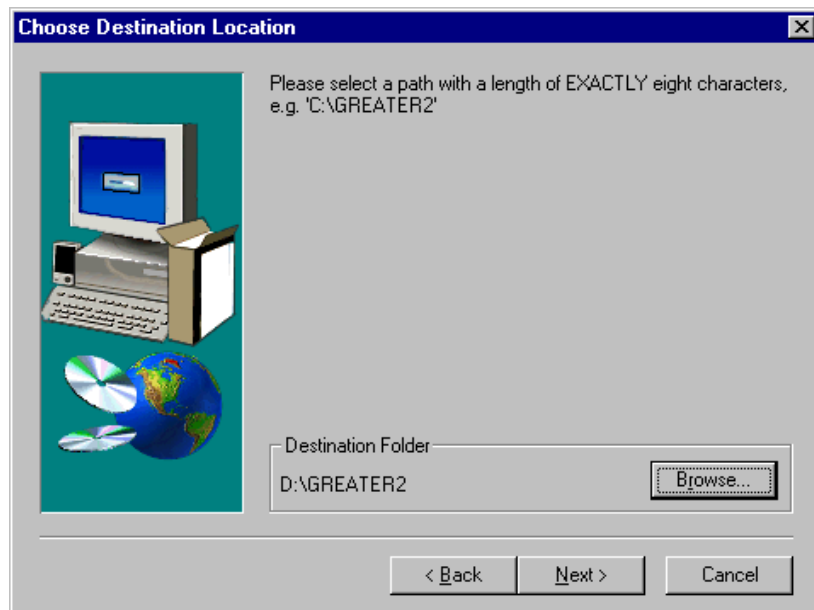


	Navigate one step back in the installation process.
	Continue the installation process and navigate to the next step.
	Exit the setup program.

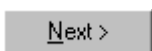
If the destination folder is not correct, then please click on the button  and a new window for selecting the appropriate directory will be displayed on the screen.



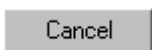
Select the installation path and confirm this action by clicking on the button . If you choose the installation path D:\GREATER2 instead of C:\GREATER2, then the screen "Choose Destination Location" is updated with the adapted installation directory.



Navigate one step back in the installation process.

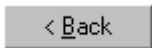
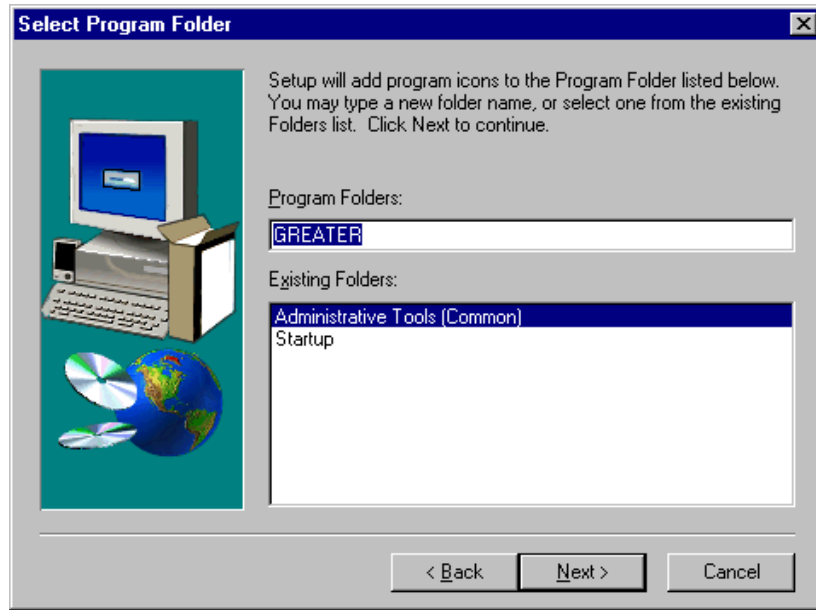


Continue the installation process and navigate to the next step.



Exit the setup program.

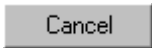
The folder name and position of the folder in the start menu must be selected in the next step.



Navigate one step back in the installation process.

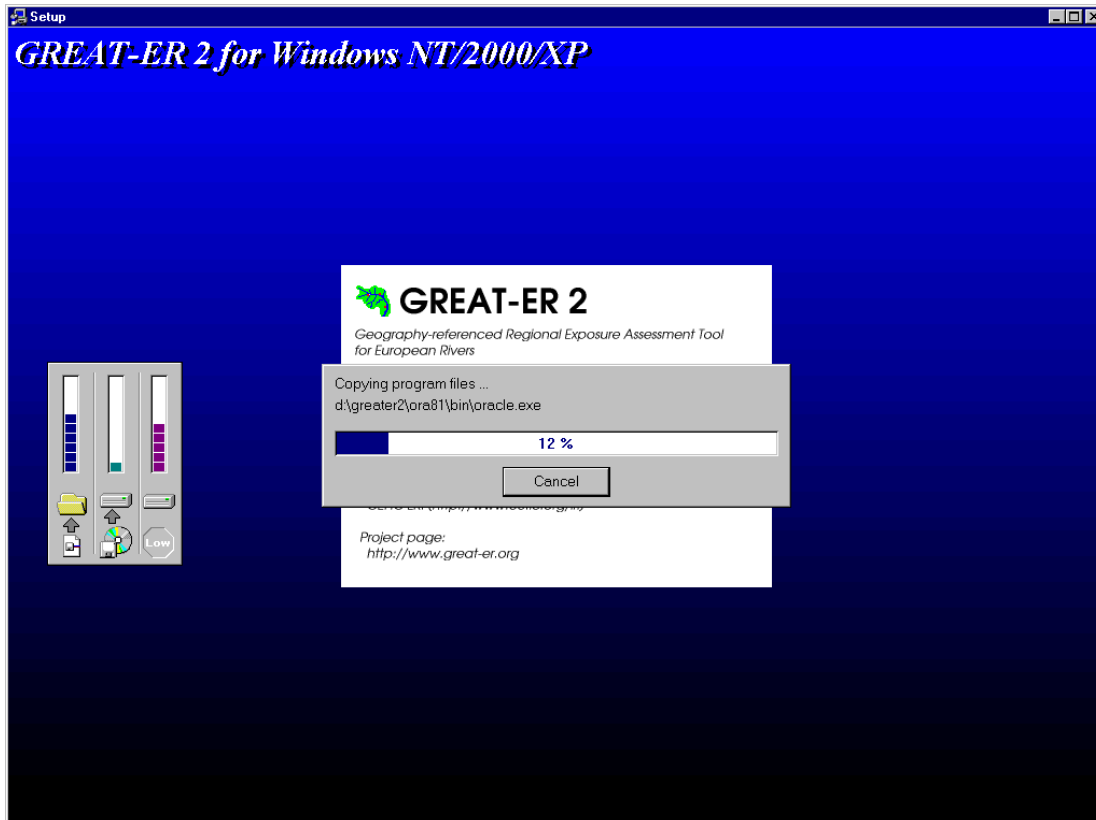


Continue the installation process and navigate to the next step.

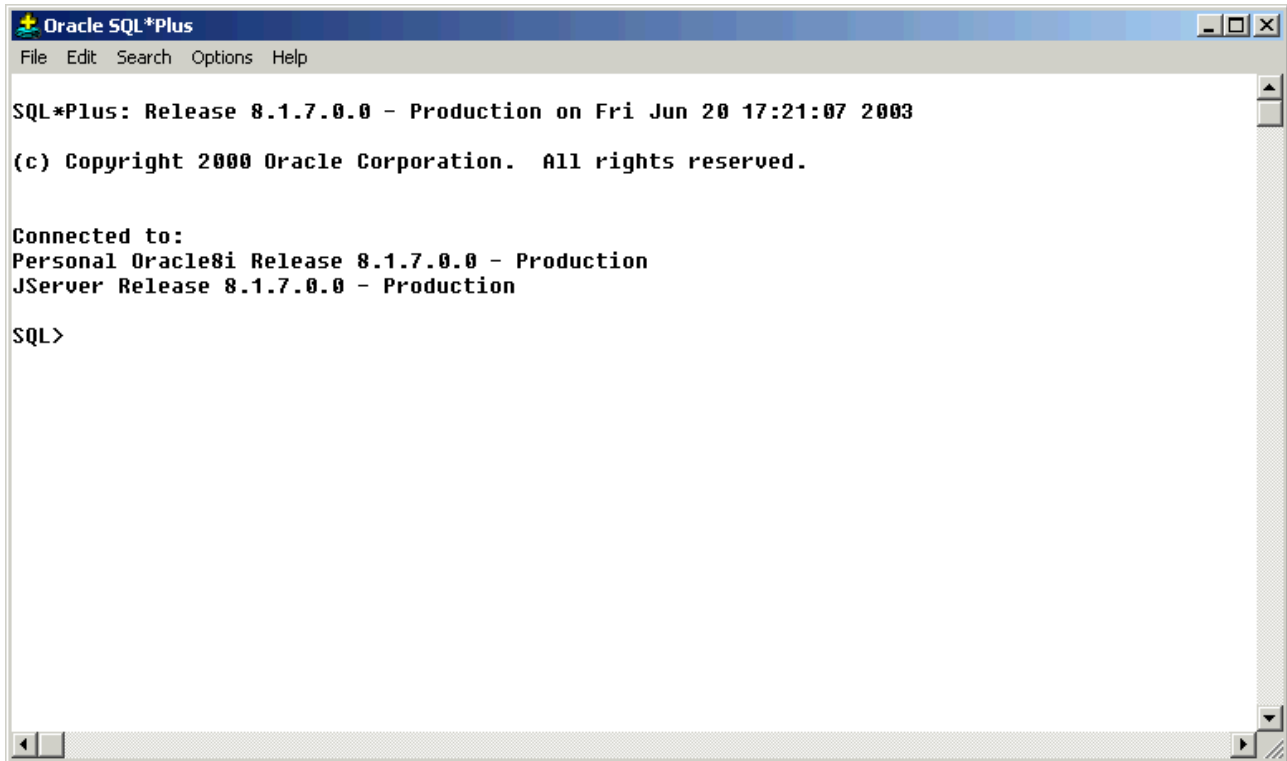


Exit the setup program.

After choosing all the settings for the installation, the program will install the ORACLE database on your computer. This step can take a while.



During the installation an update in SQL\*Plus is completed. The Personal ORACLE Database will then be started and a SQL\*Plus window will open. The window is displayed for a very short time only if the update is not very large.



The screenshot shows a standard Windows-style window titled "Oracle SQL\*Plus". The menu bar includes "File", "Edit", "Search", "Options", and "Help". The main text area contains the following information:

```
SQL*Plus: Release 8.1.7.0.0 - Production on Fri Jun 20 17:21:07 2003  
  
(c) Copyright 2000 Oracle Corporation. All rights reserved.  
  
Connected to:  
Personal Oracle8i Release 8.1.7.0.0 - Production  
JServer Release 8.1.7.0.0 - Production  
  
SQL>
```



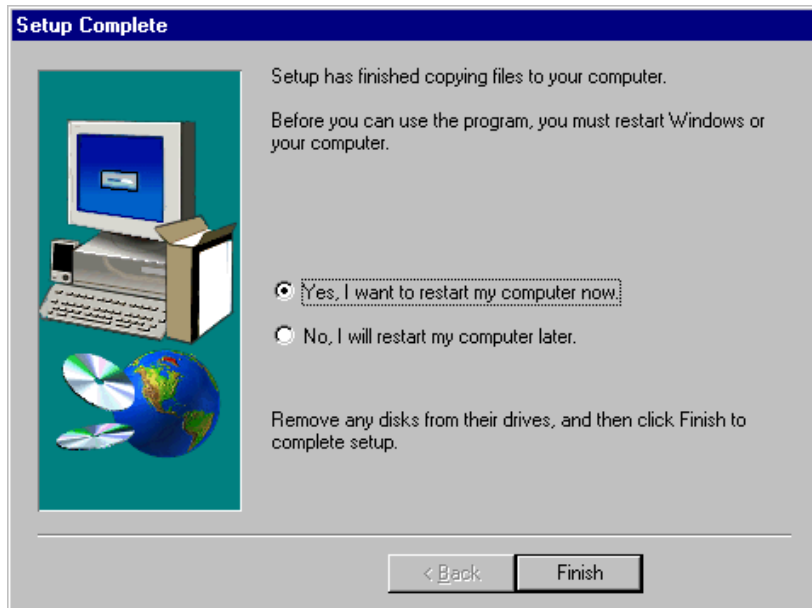
**Please note:**

If this update fails, then it must be completed manually via SQL\*Plus after the computer has been rebooted:

- 1) Open SQL\*Plus in your **GREAT-ER** folder
- 2) Logon with user GREATER2 and password GREATER2
- 3) Enter the following command line in SQL\*Plus:  
@c:\greater2\GREAT-ER\update\_greater.sql  
and then press the return key

The appropriate directories must be changed if other paths are used.

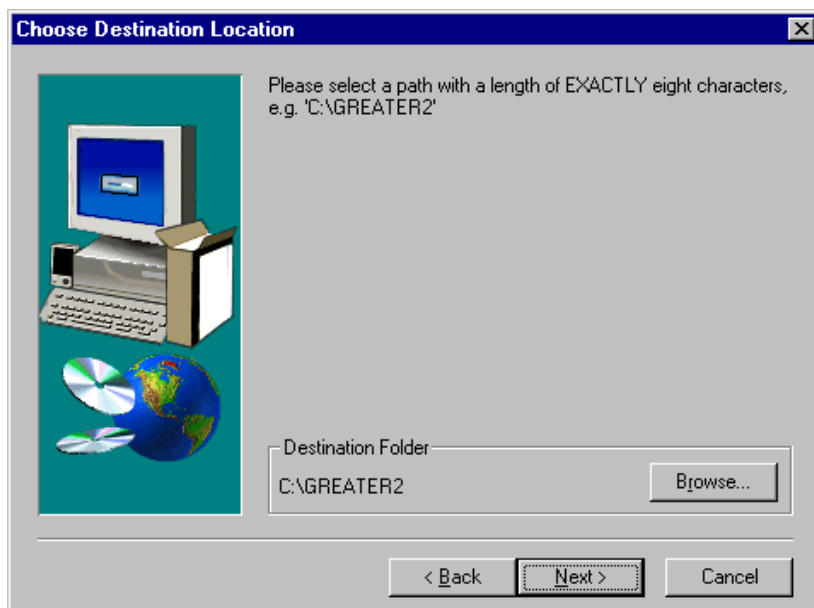
We recommended rebooting the computer after successful installation. This can be executed by selecting this option on the last screen.



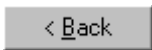


### 3.1.2 Network Version – Client

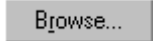
The ORACLE 8.1.7 client must be installed and configured in order to run the network version client on your computer. The data and **GREAT-ER** objects are stored in an ORACLE database. The ORACLE database with its objects must be available in order to use the **GREAT-ER** client.

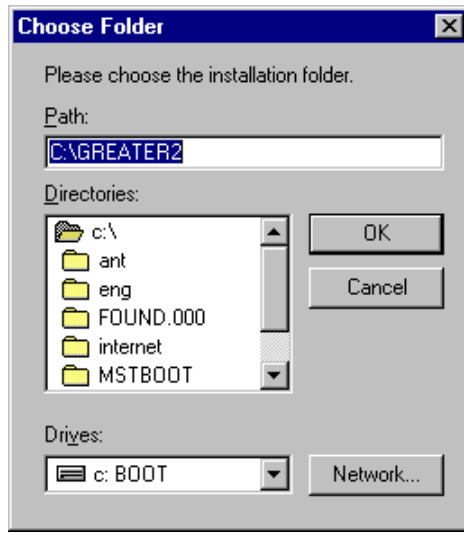
The setup program now determines the appropriate directory for the installation. Please check whether the directory suggested (e.g. C:\GREATER2) is convenient for the **GREAT-ER** software installation.




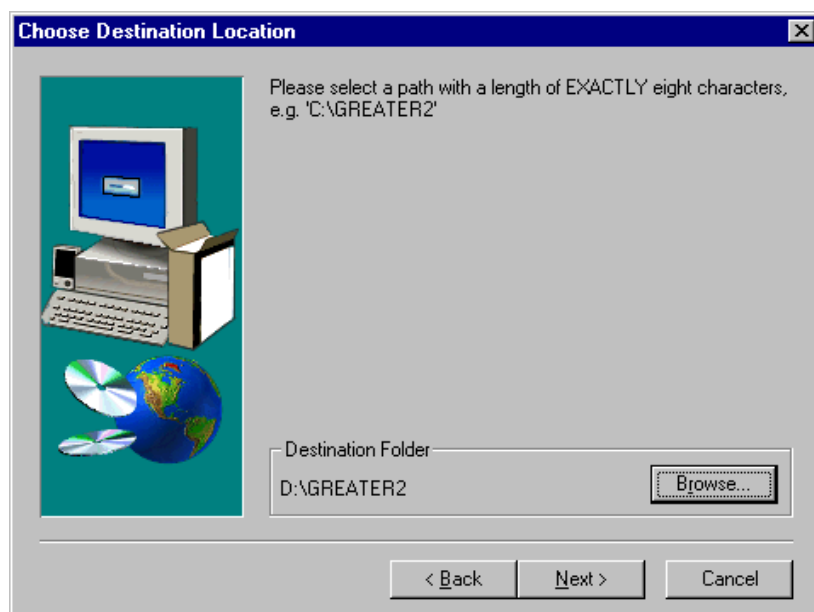
3. Installation

-  < Back      Navigate one step back in the installation process.
-  Next >      Continue the installation process and navigate to the next step.
-  Cancel      Exit the setup program.

If the destination folder is not correct, then please click on the button  and a new window for selecting the appropriate directory will be displayed on the screen.



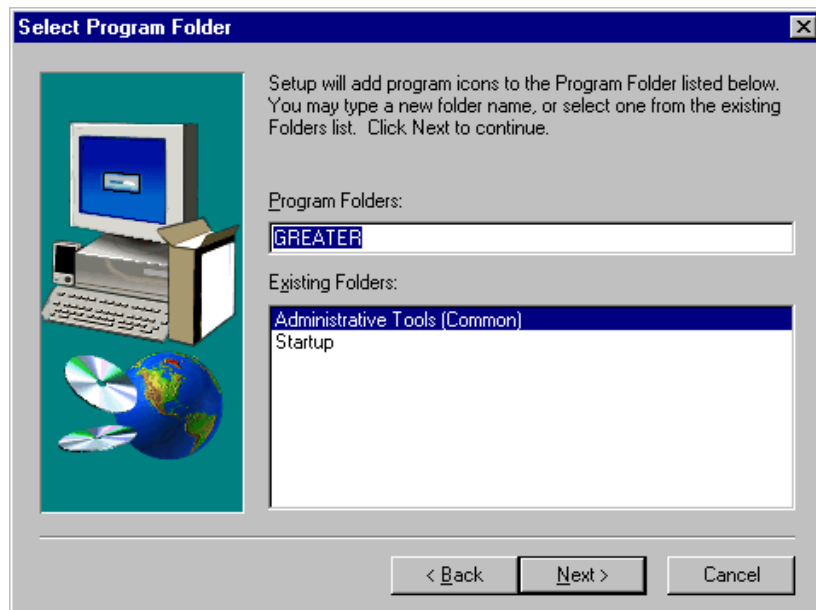
Select the installation path and confirm this action by clicking on the button . If you choose the installation path D:\GREATER2 instead of C:\GREATER2, then the screen "Choose Destination Location" will be updated with the adapted installation directory.



## 3. Installation

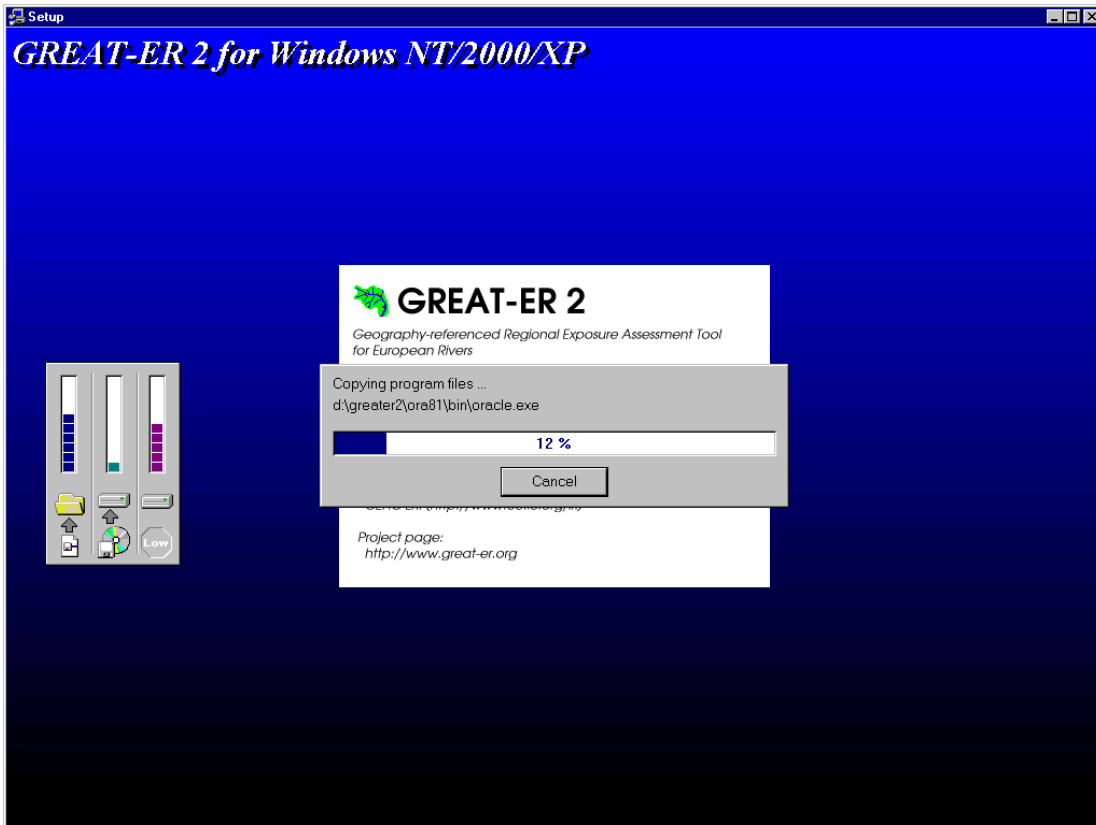
- |        |  |
|--------|--|
| < Back | Navigate one step back in the installation process.              |
| Next > | Continue the installation process and navigate to the next step. |
| Cancel | Exit the setup program.  |

A program folder will be created in the windows start menu in the next step. The folder name and position of the folder in the start menu must be selected in the screen "Select Program Folder".

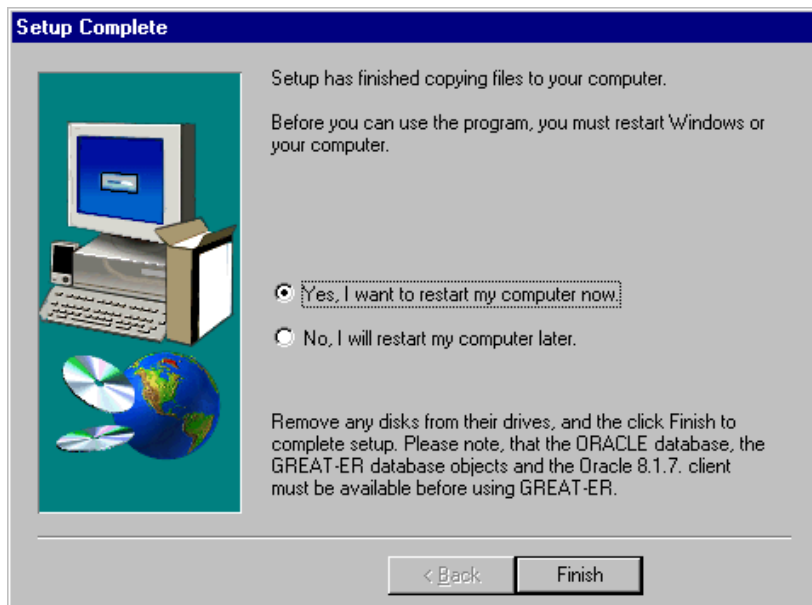


- |        |  |
|--------|--|
| < Back | Navigate one step back in the installation process.              |
| Next > | Continue the installation process and navigate to the next step. |
| Cancel | Exit the setup program.  |

After choosing all the settings for the installation, the program will copy the **GREAT-ER** files onto your computer. This step can take a while.



We recommend rebooting the computer after successful installation. This can be executed by selecting this option on the last screen.

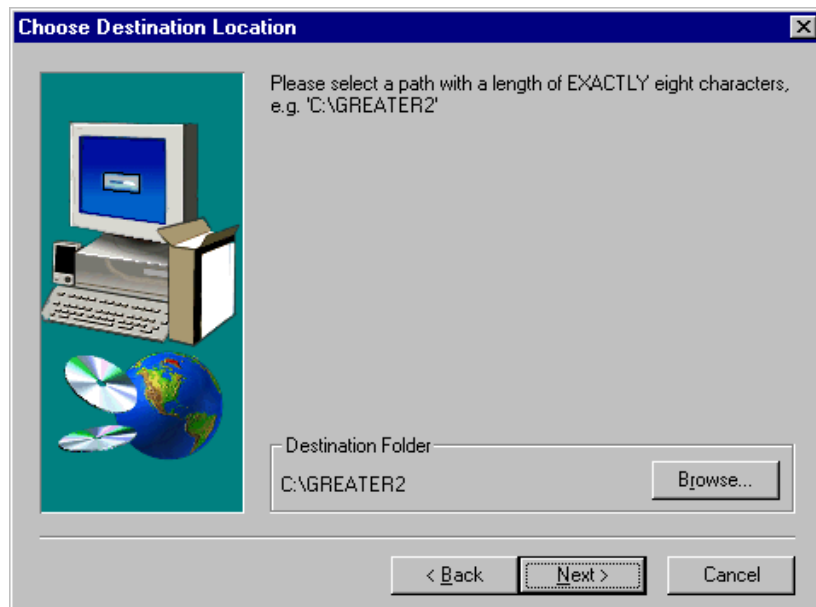


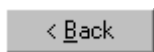
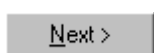
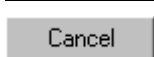
### 3.1.3 Network Version – Server

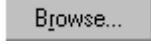
The following ORACLE utilities must be available in order to install the database scripts for the network version:

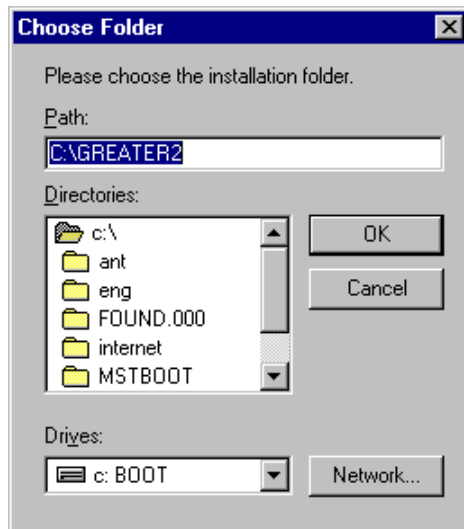
- SQL\*Plus
- ORACLE import
- Net8


The setup program now determines the appropriate directory for the installation. Please check, whether the directory suggested (e.g. C:\GREATER2) is convenient for the **GREAT-ER** software installation.

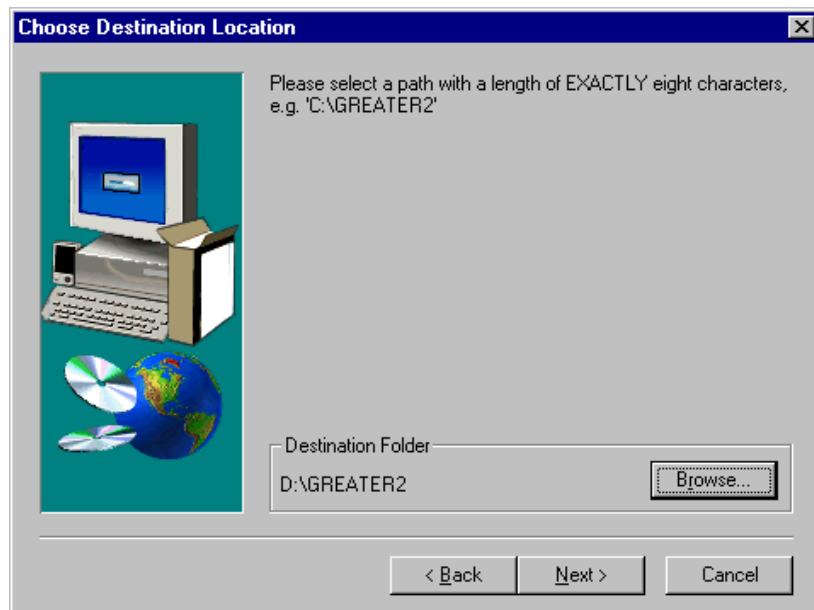


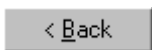
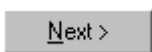
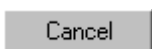
- |   |  |
|---|--|
|  | Navigate one step back in the installation process.              |
|  | Continue the installation process and navigate to the next step. |
|  | Exit the setup program.  |

If the destination folder is not correct, then please click on the button  and a new window for selecting the appropriate directory will be displayed on the screen.

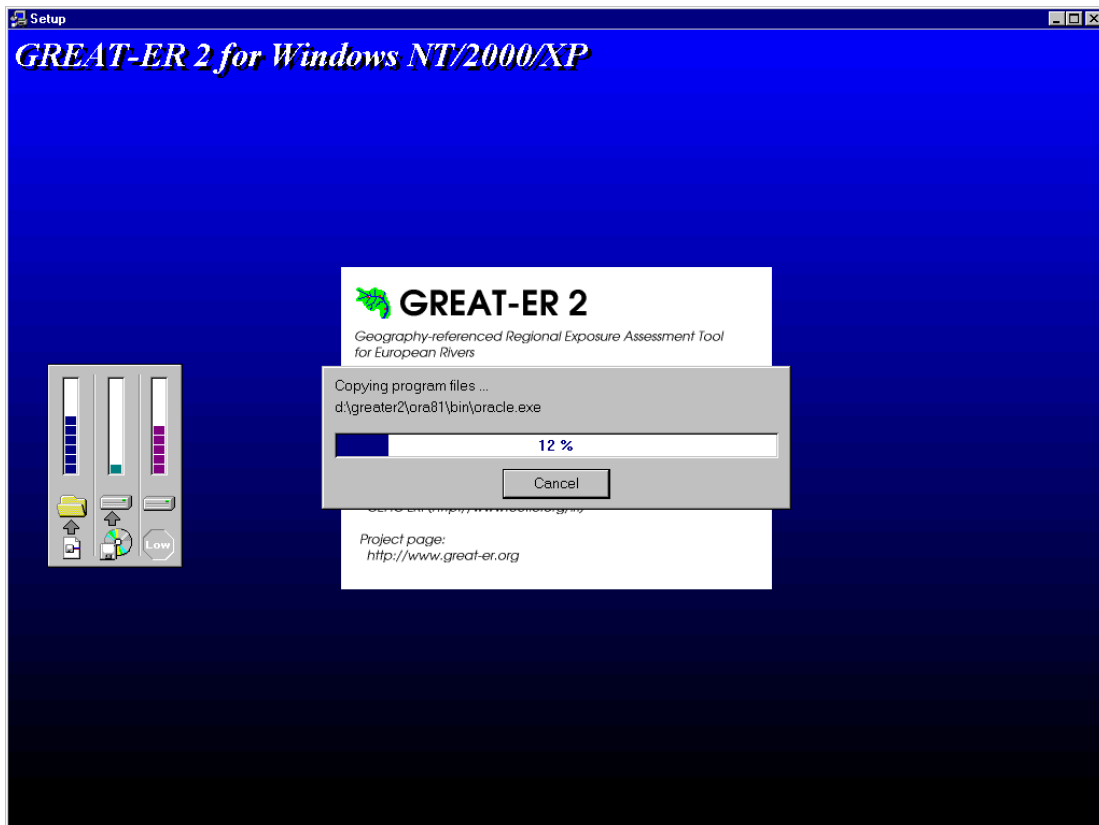


Select the installation path and confirm this action by clicking on the button . If you choose the installation path D:\GREATER2 instead of C:\GREATER2, then the screen "Choose Destination Location" is updated with the adapted installation directory.



-  < Back      Navigate one step back in the installation process.
-  Next >      Continue the installation process and navigate to the next step.
-  Cancel      Exit the setup program.

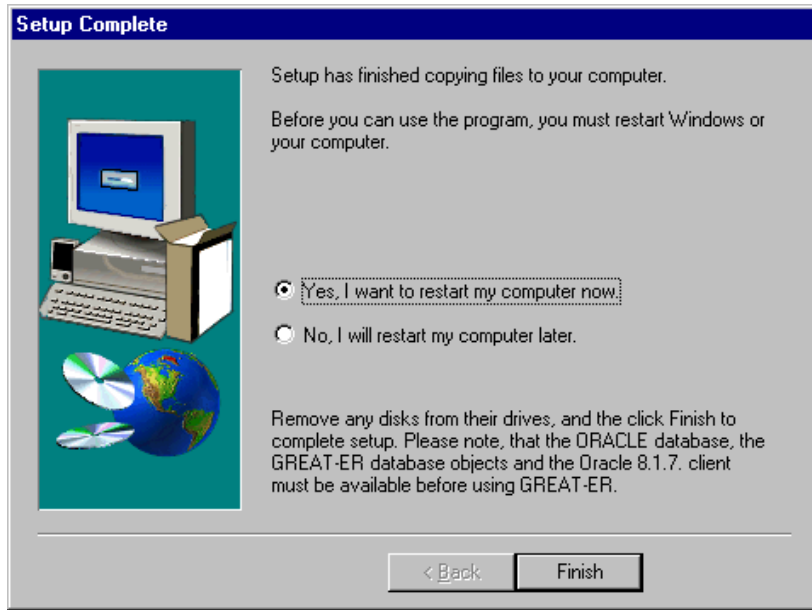
After choosing all the settings for the installation, the program will copy the installation scripts onto your computer.



**Please note:**

If the server part of the network installation is selected, then the **GREAT-ER** database objects must be installed manually. In this case only the installation scripts are copied into the file system. The installation is described in chapter "3.2 Manual Installation" in this documentation. The scripts can also be used for UNIX systems.

We recommend rebooting the computer after successful installation. This can be executed by selecting this option on the last screen.



## 3.2 Manual Installation

The manual installation must be executed if the setup type "network version - server" is selected during the setup program installation. But please note, that some ORACLE knowledge would be advantageous for this kind of installation.



**Please note:**  
 If you already have installed a previous version of **GREAT-ER** in the same database, or if you have an non completed or unsuccessful installation of the database objects you should remove this before you perform the steps described in chapter "3.2 Manual Installation" in this documentation.  
 Start SQL+ as ORACLE user SYSTEM and enter the following two command to remove a previous version of the GREAT-ER database objects:

```
drop user <greater_user> cascade;
drop role da_greater_standard_role;
```

### 3.2.1 Create Tablespace and User

The tablespace must be created before the database objects can be created. We recommend using the following sizes for the **GREAT-ER** tablespaces.

Installation type	Tablespace total
Minimum	70 MB
Recommended	300 MB

The standard installation script for the database objects creates the tablespace size of 300MB. The script create\_system.sql must be modified in a text editor if another size should be used.

The following installation is executed for the directory C:\GREATER2. If other paths are used, the appropriate directories must be adapted.

Open a MSDOS-window and enter the following commands

```
cd c:\greater2\install

sqlplus system/<system_pwd>@<database> @create_system.sql
<greater_user> <tablespace_path> <tablespace_name>
```

Example:

```
sqlplus system/manager@orcl @create_system.sql GREATER2
C:\GREATER2\DATABASE\GREATER2.ORA GREATER
```

Parameter:	<system_pwd>	user system password
	<database>	database alias
	<greater_user>	<b>GREAT-ER</b> user name
	<tablespace_path>	tablespace path
	<tablespace_name>	tablespace name

Check the file "create\_system.log" for errors after executing these commands.

### 3.2.2 Create Database Objects – Part 1

Open a MSDOS-window and enter the following commands

```
cd c:\greater2\install

sqlplus <greater_user>/<greater_pwd>@<database> @create_db_objects.sql
<tablespace_name>
```

Example:

```
sqlplus greater2/greater2@orcl @create_db_objects.sql GREATER2
C:\GREATER2\DATABASE\GREATER2.ORA GREATER
```

Parameter:	<greater_user>	<b>GREAT-ER</b> user name
	<greater_pwd>	<b>GREAT-ER</b> user password

<database>	database alias
<tablespace_name>	tablespace name

Check the file "create\_db\_objects.log" for errors after the executing these commands.

### 3.2.3 Import Data

Open a MSDOS-window and enter the following commands

```
cd c:\greater2\install

imp <greater_user>/<greater_pwd>@<database> file=greater2.dmp ignore=y
grants=n constraints=n buffer=500000 fromuser=greater200
touser=<greater_user>
```

Example:

```
imp greater2/greater2@orcl file=greater2.dmp ignore=y grants=n
constraints=n buffer=500000 fromuser=greater200 touser=greater2
```

Parameter:	<greater_user>	<b>GREAT-ER</b> user name
	<greater_pwd>	<b>GREAT-ER</b> user password
	<database>	database alias

### 3.2.4 Create Database Objects – Part 2

Open a MSDOS-window and enter the following commands

```
cd c:\greater2\install

sqlplus <greater_user>/<greater_pwd>@<database> @update_objects.sql
```

Example:

```
sqlplus greater2/greater2@orcl @update_objects.sql
```

Parameter:	<greater_user>	<b>GREAT-ER</b> user name
	<greater_pwd>	<b>GREAT-ER</b> user password

---

<database>

database alias

Check the file "update\_objects.log" for errors after executing these commands.