

Under CEFIC LRI's Environmental Exposure Modelling Programme

Authors: Jochen Rominger, Sibylle Fels, Stefan Esch, TechniData AG, Markdorf Germany
 Frank Koormann, Jan-Oliver Wagner, Silke Reimer, Intevation GmbH, Osnabrück Germany

GREAT-ER (Geography-Referenced Regional Exposure Assessment Tool for European Rivers) - A GIS assisted model for environmental risk assessment and management of chemicals in river basins -

GREAT-ER II benefits & content

The software professionalisation includes a conversion of the GREAT-ER 1 software: from a stand-alone to a client-server architecture, with modularisation and web-enabling.

GREAT-ER simulates the distribution of substance concentrations (PECs) in river networks, in order to perform risk assessments.

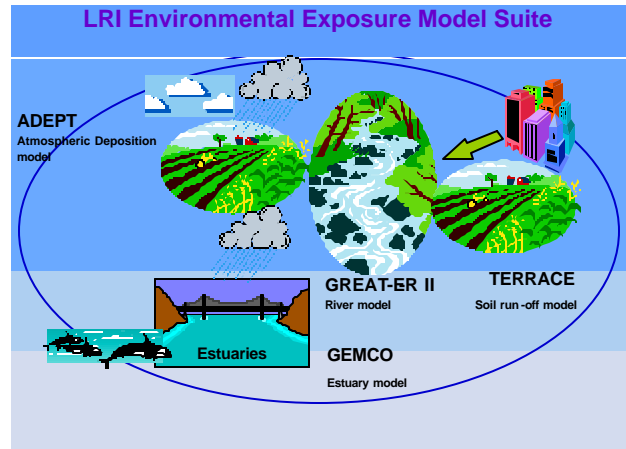
Geography-referenced data can be edited and modelled.

Different model modes are available.

For data analysis graphical and textual facilities are included.

The system is open for integration with other LRI exposure models.

Seeks integration with other LRI exposure models



Scope of the GREAT-ER II software development project:

The application has a flexible, scaleable and modular approach.

The client-server architecture enables team work.

A relational database includes an repository for various data types .

In addition to the desktop user interface, the simulation system and data management can be accessed with a web-based user interface.

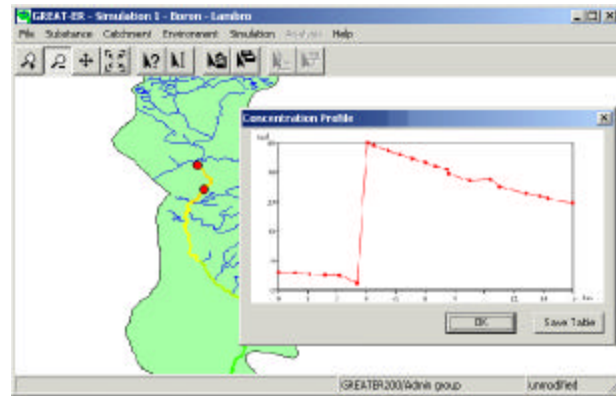
From the IUCLID data base substance data can be loaded into GREAT-ER.

The model coupling is based on chain of models.

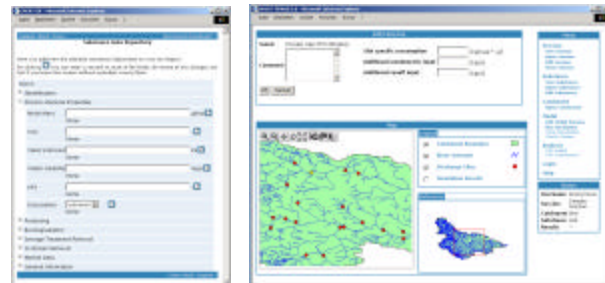
Parallel computing offers fast simulation results.

There is a user authorization concept for data security.

GREAT-ER Desktop client:
 Implemented with a new, free software, GIS System (Thuban)



GREAT-ER Web client:
 Simple web interface with basic GREAT-ER functionality



Time schedule of project 4/2002 - 10/2003

The project is funded by CEFIC-LRI and supported by the LRI Research Liaison Team (Diederik Schowanek, Roland Schroeder, Maurizio Silvani & Mick Whelan).

software developed by: